

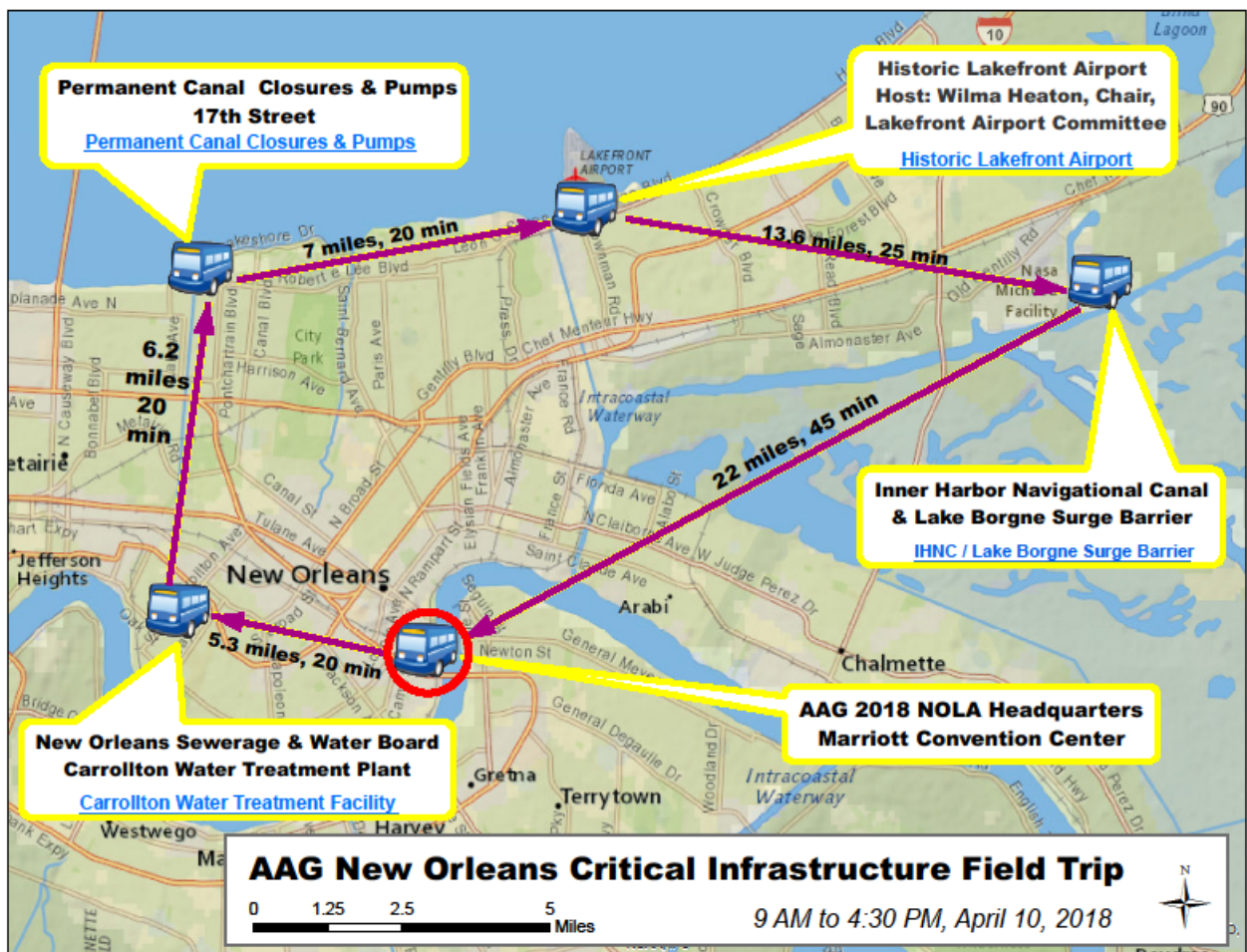
Tuesday, April 10, 2018 (9AM-4PM) New Orleans Critical Infrastructure Field Trip

Field Trip to four (4) of New Orleans' critical environmental infrastructure operations. Meet with regional infrastructure experts and engineers and learn about careers in sustainable environmental infrastructure. At \$25 (with lunch), it's a great deal for undergrad/grad students and faculty alike. Pre-registration required.

- [Carrollton Water Treatment Facility](#) – where the City of New Orleans treats its drinking water
- [Permanent Canal Closures and Pumps - 17th Street](#) –the City's largest stormwater station
- [Historic Art Deco Lakefront Airport](#) (Lunch) Amelia Earhart stopped on her last, fateful flight
- [Inner Harbor Navigational Canal/Lake Borgne Surge Barrier](#) (1.8 miles long, \$1.3 billion)

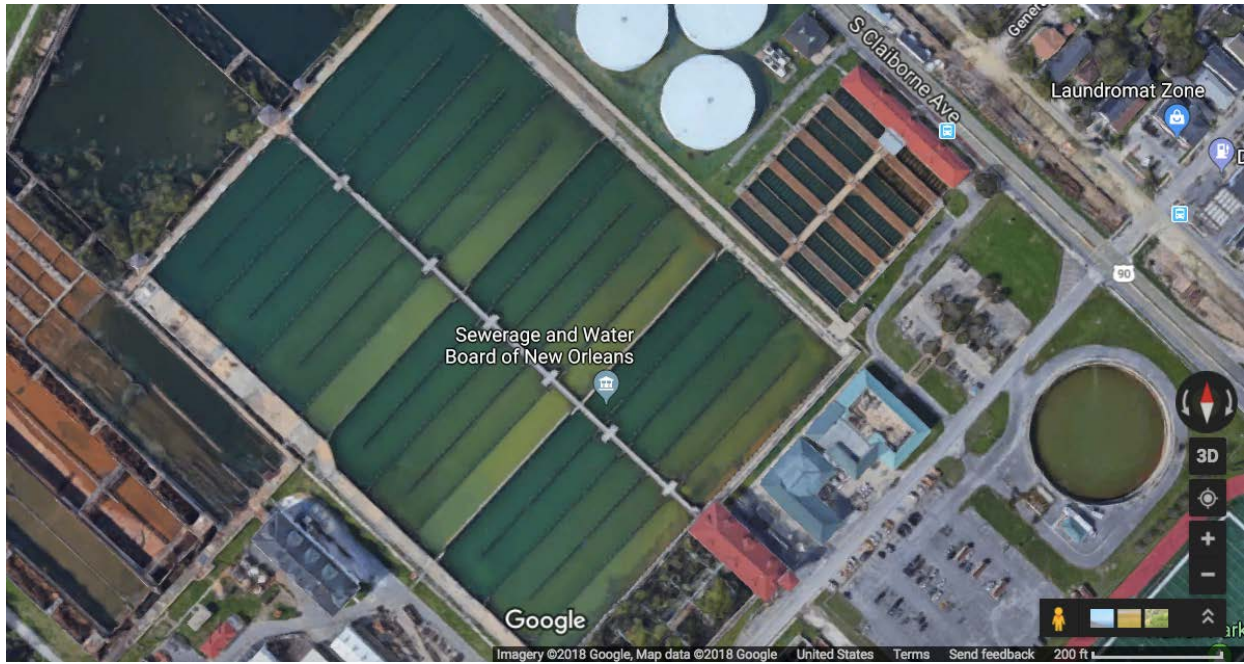
How to Register:

1. Sign in to AAG website at <http://www.aag.org/>
2. Open [this page](#) and scroll to “4/10/2018 9:00 AM F1_11 New Orleans' Environmental Infrastructure Tour”
3. Click Add



New Orleans Infrastructure Facilities – AAG Tour (4/10/18) Site Photos

- 1) Sewerage and Water Board - Carrollton Water Treatment Facility – 1800 South Carrollton



- 2) Permanent Canal Closures & Pumps Station – 17th Street



3) Historic Art Deco - Lake Front Airport – 6001 Stars and Stripes Boulevard



4) Inner Harbor Navigation Canal – Lake Borgne Surge Barrier

